

CERTIFICATE OF LOCATION OF GOVERNMENT CORNER

EAST QUARTER Corner of Section 5, Township 106, Range 40, 5TH P.M.

STATE OF MINNESOTA, County of MURRAY

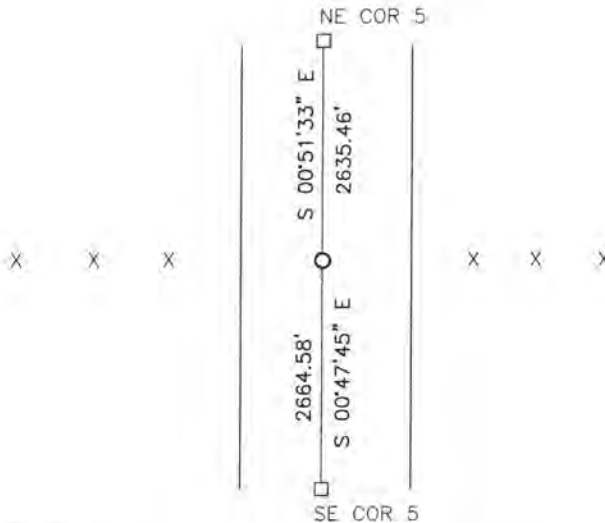
At the corner location shown on the sketch:

On 4/3/15 found a wood post
DATE

left monument as found, lowered monument, removed monument (explain)

On 4/3/15 placed a 5/8" iron with seal #43844
DATE

SKETCH OF REFERENCE TIES



Minnesota State Plane Coordinate
 System Murray County Datum
 NAD83 (1996)

NO TIES

N: 160812.379
 E: 527234.782

Statement of evidence relative to this corner location is on back of page.

I hereby certify that this document and the data contained herein was prepared by me or under my direct supervision.

[Signature] 3/2/16
SIGNATURE DATE

Registration No. 43844

- Land Surveyor, Professional Engineer
- County Surveyor, County Engineer

OFFICE OF THE COUNTY RECORDER

County of MURRAY

I hereby certify that this document was filed in the Co. Recorders office at 11:00 A.M on the 18TH day of OCTOBER A.D. 20 16

County Recorder Evelyn C. Larson

By _____, Deputy

DOCUMENT NO. _____

Statement of Evidence

In, 1861, D.W. Wellman and S.S. Smoot did the original subdivision of the township.

On October 16, 1901, J.W. Woolstencroft recorded a stone in grade at the corner.

On April 3, 2015, Bueltel-Moseng Land Surveying dug with a backhoe and found an old wood post at the corner. We removed the old wood post and continued digging and found nothing. We set a 5/8" iron with seal #43844 in place of old wood post.